



# Gillies



## OUR BRANDS

Gillies

TASMANIAN DEVIL

BLUEWATER

by StumpJumper

Talbot

SEA DOG

Classic Lure

WARLOCK

2019 - 2020 INTERNATIONAL CATALOGUE





## ABOUT US

J.M.Gillies has been servicing the fishing tackle industry for over 90 years and continues to offer the highest quality, innovative and most sought after brands of fishing tackle and lures designed in Australia and selling throughout the World and we are proud to be 100% Australian owned.

The Gillies lure range represents the best in Australian designs by the leading lure designers in the country, legendary Aboriginal lure expert Lance Butler spends thousands of hours on the water every year fine tuning and developing the most innovative and specialist lures in the world. The range includes exclusive freshwater models to the best in Bluewater game fishing lures and offers anglers all over the world, the best colours and designs available. All lures are constructed from the highest quality materials and fittings and all are vigorously tested to ensure they perform perfectly fish after fish.

More recently J.M.Gillies acquired the Wigston's Lures company in Tasmania Australia, who manufacture the world famous Tasmanian Devil lures. For more information, visit the Gillies International lure website at [www.gillieslures.com](http://www.gillieslures.com)



## CONTACT US



**Website:**  
[www.gillieslures.com](http://www.gillieslures.com)



**Sales Enquiries: Pat Levy**  
[pat@jmgillies.com.au](mailto:pat@jmgillies.com.au)



**Head Office:**  
**Phone:** 61 3 9368 6400



**Head Office:**  
**Fax:** 61 3 8360 8189



**Shipping: Glenn Letts**  
[glenn@jmgillies.com.au](mailto:glenn@jmgillies.com.au)

\* Due to J.M.Gillies constant product development, specifications and images may vary from those published in this catalogue. All sizes and measurements are approximates only.





FLOATING STICKBAIT



SINKING STICKBAIT



SPEED SKIRT



FILLET KNIFE



SPEED PLUG



DEVIL BLADE



DEVIL SPOON



PEGRON



SPK HOOKS



3D CAMO MONO LINE



LEADCORE LINE



FISHING SHIRT



TRUCKERS CAP



HEADWEAR

## INDEX

PAGE

NEW PRODUCTS . . . . .	3
TASMANIAN DEVIL SERIES . . .	4 - 9
CLASSIC BLUEWATER SERIES . .	10 - 15
STUMPJUMPER SERIES . . . . .	16 - 19
CLASSIC SERIES . . . . .	20 - 25
WARLOCK SERIES . . . . .	26 - 27
KILLALURE SERIES . . . . .	28 - 31
LURE DIVE DEPTHS . . . . .	32
SEA DOG PRODUCTS . . . . .	33
GALLERY . . . . .	34 - 35

## NEW SEASON PRODUCTS

Gillies are continually developing the most innovative products and specialist lures in the world. This season we have new models and also improved lures and colour patterns to further compliment our range.

\* Due to J.M.Gillies constant product development, specifications and images may vary from those published in this catalogue. All sizes and measurements are approximates only.





# TASMANIAN DEVIL PRODUCTS

## TASMANIAN DEVIL BLADES

The Tasmanian Devil 'Devil Blade' features a uniquely designed spinner blade which has been created to match the famous Tassie Devil lure. The blade provides a distinct action as it spins through the water. Custom Tassie Devil paint designs have been created specifically for freshwater species. Each lure is equipped with quality terminal tackle and VMC treble hooks.

### COLOUR RANGE

2 Sizes available : 3.8gm & 5.4gm



## TASMANIAN DEVIL SPOONS

The Tasmanian Devil 'Devil Spoon' lure offers dual attraction of vibration and flash. As the spoon travels through the water it flutters from side to side and emits a vibration that attracts fish even in cloudy water. The polished under side of the Devil Spoon produces a flash attraction, ideal in clear running water and is a proven trigger for predatory species.

### COLOUR RANGE

2 Sizes available: 7.5gm & 12.5gm



## TASMANIAN DEVIL PEGRON

The Tasmanian Devil Pegron range of lures have a trademark swaying action that simply drives predators crazy. Best used with a slow retrieve, or hopped along the bottom. Available in 5 colours.



## TASMANIAN DEVIL HOOKS

The Tasmanian Devil range of single hooks are designed with an extra-wide gap to improve hook up rate and a large eye for easy assembly and freedom of movement with split rings. All hooks are 5 per pack.





# TASMANIAN DEVIL PRODUCTS



## TASMANIAN DEVIL MONO LINE

The Tasmanian Devil Mono range of lines are supple and are processed with real camouflage effect that imitates silt and plankton floating in water; moreover, the brownish 3D captures natural essence of chameleon. When you have the line above water, fluorescent glitter helps you trace its direction easily, but the part in the water where light penetration becomes less, the line turns brown with less reflection. This unique line has excellent knot strength and the coil memory and shock-resistant performance is improved making it suitable as reel mainline and as leader.

6-8-10LB / 200mt spools



## TASMANIAN DEVIL LEADCORE LINE

Tasmanian Devil Leadcore is an innovative line that allows a lure or fly to be trolled at varying depths without the aid of a paravane or trolling sinkers. The leadcore trolling line is constructed from tightly braided nylon multi-filament woven over a core of pure lead resulting in a fine diameter line with high visibility colour metering every 10 yards. The colour metering makes it easy to monitor the depth being fished.

14-18-27lb / 100mt spools  
(also 18lb 30mts)



## TASMANIAN DEVIL MERCHANDISE

The Tasmanian Devil range of merchandise features fishing shirts that are available in sizes S-M-L-XL-2XL-3XL and also available are the Tasmanian Devil Headwear and Truckers Cap (one size fits all). All merchandise is manufactured from high quality material.



Front

Fishing shirt

Back



Truckers Cap



Headwear







# TASMANIAN DEVIL LURES

## TASMANIAN DEVIL LURES

Tasmanian Devil lures are a unique Australian product designed for trolling, casting or jigging in fresh and saltwater. The lure action is due to the revolutionary winged technology that causes the lure to swim in an irregular manner, darting and diving, simulating the movement of wounded fish. This pulsating action is transmitted to the rod tip that will show as a "nodding action" that is proof that the lure is swimming correctly. If this rod tip action is not present, either a piece of weed, or a fish is on the hook. All five sizes of the Tasmanian Devil swim in this erratic manner and this is the reason our lures are so effective. The loose flight stainless steel centre or the line-through rigging method used with the 7, 13.5, 20 or 26 gram version prevents fish from throwing the hook as both methods allow the lure body to slide up the line away from the fish. Regardless of the species that is targeted, the Tasmanian Devil qualifies as an all round lure. Whatever your quarry, from Brown Trout and Rainbow Trout to School Mackerel and Salmon, the Tassie Devil is a sure fire hit and will land you your target species time and time again. Effortless to cast, simple to troll and easy to jig.

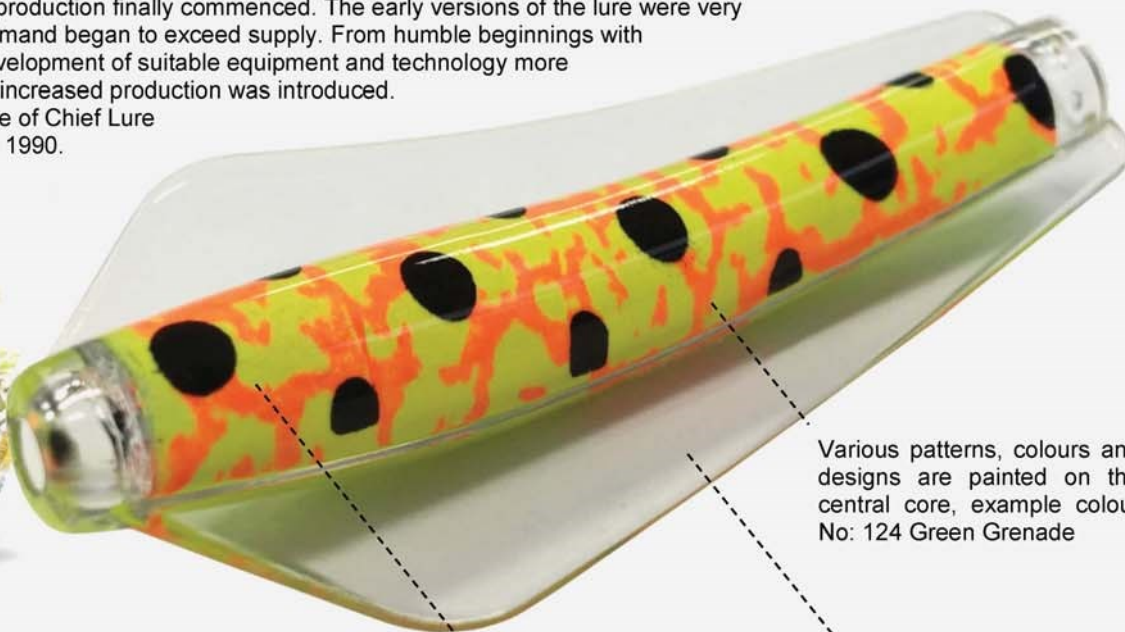
## ABOUT WIGSTON'S LURES

In 1934, Eddie Wigston founded a retail store in the town of New Norfolk situated on the Derwent River (a popular trout fishing district) 22 miles upstream from Hobart, the Capital of Tasmania. As a keen marksman and an avid fisherman he operated the business known as E.L. Wigston selling radios, firearms and fishing equipment until he was joined by sons Ian and Garth. The Wigston family are keen anglers and during the 1960's considerable time was spent experimenting with home made fishing lures. Over the convivial glass of beer at the local club one Friday evening during the late 70's, the concept of mass production of lures was discussed at length by Eddie, Ian and Garth.



## THE NAME

A name for the lure was all important and finally the selection of "Tasmanian Devil" (after an aggressive indigenous Tasmanian Marsupial) was chosen. The "Tassie Devil" as it is more affectionately known, was born. Toward the end of 1979, production finally commenced. The early versions of the lure were very quickly snapped up as demand began to exceed supply. From humble beginnings with a hand made product, development of suitable equipment and technology more appropriate to the task of increased production was introduced. Eddie continued in the role of Chief Lure Tester until his passing in 1990.



Various patterns, colours and designs are painted on the central core, example colour No: 124 Green Grenade

## THE LURE

The Lure was to consist of a hollow weighted torpedo shaped central core surrounded with plastic including curved wings out each side which give the lure its unique action.

### TROLLING AND RETRIEVE SPEED

The best way to gauge the correct speed of the lure when trolling or cast and retrieving is to watch the rod tip. The tip of the rod should be nodding, or pulsing with the lure as it moves through the water with its uniquely irresistible action.

Weight: 7gm-1/4oz  
Length: 37mm  
Dive depth: 1.0mt



7 GRAM

Weight: 13.5gm-7/16oz  
Length: 52mm  
Dive depth: 1.0mt



13.5 GRAM

Weight: 20gm-11/16oz  
Length: 55mm  
Dive depth: 2.2mt & 3.3mt



20 GRAM

Weight: 26gm-7/8oz  
Length: 75mm  
Dive depth: 3.3mt



26 GRAM



# TASMANIAN DEVIL LURES



## TASMANIAN DEVIL LURES

Tasmanian Devil lures are a unique Australian product designed for trolling, casting or jigging in fresh and saltwater. The lure action is due to the revolutionary winged technology that causes the lure to swim in an irregular manner, darting and diving, simulating the movement of wounded fish. This pulsating action is transmitted to the rod tip that will show as a "nodding action" that is proof that the lure is swimming correctly. If this rod tip action is not present, either a piece of weed, or a fish is on the hook. Regardless of the species that is targeted, the Tasmanian Devil qualifies as an all round lure. Effortless to cast, simple to troll and easy to jig.

### SINGLE LURES



<b>7gm</b>	<b>13.5gm</b>	<b>20gm</b>	<b>26gm</b>
Little Devil	Tassie Devil	Dual Depth	Big Devil

### LURE PACKS



<b>7gm-3pk</b>	<b>13.5gm-3pk</b>	<b>7/13.5/20gm</b>	<b>Combo 13.5/20gm</b>	<b>Dual Depth</b>
Code: 18LT3P	Code: 18T3P	Code: 18COMP	Code: 18TTD3P	

### LURE PACKS

Other lake packs available are: Campaspe, Mulwala



<b>7gm-4pk</b>	<b>13.5gm-4pk</b>	<b>13.5gm-4pk</b>	<b>Eildon</b>	<b>Dartmouth</b>	<b>Eucumbene</b>	<b>Jindabyne</b>
Code: 18LTB	Code: 18TB	Code: 18TLPSW	Code: 18TLPEI	Code: 18TLPPA	Code: 18TLPEU	Code: 18TLPJIN

### INSERTS & ACCESSORIES



<b>CS1 Insert</b>	<b>CS2 Insert</b>	<b>CS3 Insert</b>	<b>TS2 Twin Hooks</b>	<b>CT1 Insert</b>	<b>CT2 Insert</b>	<b>CT3 Insert</b>	<b>Red Beads</b>	<b>Anti Kink Keels</b>
7gm Single	13.5gm Single	26gm Single	13.5gm Singles	7gm Treble	13.5gm Treble	26gm Treble	For Rigging	Reduce Line Twist





# TASMANIAN DEVIL LURES

## LURE COLOUR RANGE



04 Clown

Size	7gm	13.5gm	20gm	26gm
Available	✓	✓	✓	✓



05 Tequila Sunrise

Size	7gm	13.5gm	20gm	26gm
Available	✓	✓	✓	✓



10 Bronze Whaler

Size	7gm	13.5gm	20gm	26gm
Available	✓	✓	✓	✗



13 Predator

Size	7gm	13.5gm	20gm	26gm
Available	✓	✓	✓	✓



15 Red Terror

Size	7gm	13.5gm	20gm	26gm
Available	✓	✓	✓	✓



16 Mardi Gras

Size	7gm	13.5gm	20gm	26gm
Available	✓	✓	✓	✗



26 Pink Lady

Size	7gm	13.5gm	20gm	26gm
Available	✓	✓	✓	✓



47 Fire Tiger

Size	7gm	13.5gm	20gm	26gm
Available	✓	✓	✓	✓



48 Red Nosed Brown Bomber

Size	7gm	13.5gm	20gm	26gm
Available	✓	✓	✓	✓



50 Frog

Size	7gm	13.5gm	20gm	26gm
Available	✓	✓	✓	✓



51 Xmas Tree

Size	7gm	13.5gm	20gm	26gm
Available	✓	✓	✓	✓



52 Hornet

Size	7gm	13.5gm	20gm	26gm
Available	✓	✓	✓	✓



55 Pink Panther

Size	7gm	13.5gm	20gm	26gm
Available	✓	✓	✓	✓



56 Fireball

Size	7gm	13.5gm	20gm	26gm
Available	✓	✓	✓	✗



82 Pink Bomber

Size	7gm	13.5gm	20gm	26gm
Available	✓	✓	✓	✓



88 Gold Zebra

Size	7gm	13.5gm	20gm	26gm
Available	✓	✓	✓	✗



89 Rowley's Riot

Size	7gm	13.5gm	20gm	26gm
Available	✓	✓	✓	✗



93 White

Size	7gm	13.5gm	20gm	26gm
Available	✓	✓	✓	✓



94 Sunset Frog

Size	7gm	13.5gm	20gm	26gm
Available	✓	✓	✓	✓



96 Abigail

Size	7gm	13.5gm	20gm	26gm
Available	✓	✓	✓	✓



97 Corrobboree Frog

Size	7gm	13.5gm	20gm	26gm
Available	✓	✓	✓	✓



110 Perch

Size	7gm	13.5gm	20gm	26gm
Available	✓	✓	✓	✓



111 Willy's Special

Size	7gm	13.5gm	20gm	26gm
Available	✓	✓	✓	✓



112 Bleeding Frog

Size	7gm	13.5gm	20gm	26gm
Available	✓	✓	✓	✓



117 Bleeding Flamingo

Size	7gm	13.5gm	20gm	26gm
Available	✓	✓	✓	✓



118 Cutthroat

Size	7gm	13.5gm	20gm	26gm
Available	✓	✓	✓	✓



119 Red Bomber

Size	7gm	13.5gm	20gm	26gm
Available	✓	✓	✓	✗



120 Neon Galaxia

Size	7gm	13.5gm	20gm	26gm
Available	✓	✓	✓	✗



128 Coral Trout

Size	7gm	13.5gm	20gm	26gm
Available	✓	✓	✓	✓



129 Pink My Frog

Size	7gm	13.5gm	20gm	26gm
Available	✓	✓	✓	✓



130 Blue Bait

Size	7gm	13.5gm	20gm	26gm
Available	✓	✓	✓	✓



131 Spotted Dog

Size	7gm	13.5gm	20gm	26gm
Available	✓	✓	✓	✓



132 Watermelon

Size	7gm	13.5gm	20gm	26gm
Available	✓	✓	✓	✓



133 Lime Frog

Size	7gm	13.5gm	20gm	26gm
Available	✓	✓	✓	✓



134 Liqueurice Allsorts

Size	7gm	13.5gm	20gm	26gm
Available	✓	✓	✓	✗



S05 Tinkerbell

Size	7gm	13.5gm	20gm	26gm
Available	✓	✓	✓	✓



S11 Funky Frog

Size	7gm	13.5gm	20gm	26gm
Available	✗	✗	✗	✗



S12 Sunburst

Size	7gm	13.5gm	20gm	26gm
Available	✓	✓	✓	✓



Y05 Anglers Arty

Size	7gm	13.5gm	20gm	26gm
Available	✗	✗	✗	✗



Y48 Eucumbene Bomber

Size	7gm	13.5gm	20gm	26gm
Available	✗	✗	✗	✗



Y63 Oscar MkII

Size	7gm	13.5gm	20gm	26gm
Available	✓	✓	✓	✓



Y82 Canberra Killer





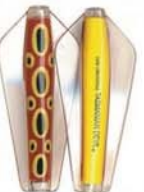









Size	7gm	13.5gm	20gm	26gm
Available	✓	✓	✓	✓



# TASMANIAN DEVIL LURES



## LURE COLOUR RANGE

 <p><b>29 Silver Bullet</b></p> <table border="1"> <tr> <td>Size</td> <td>7gm</td> <td>13.5gm</td> <td>20gm</td> <td>26gm</td> </tr> <tr> <td>Available</td> <td>✓</td> <td>✓</td> <td>✓</td> <td>✓</td> </tr> </table>	Size	7gm	13.5gm	20gm	26gm	Available	✓	✓	✓	✓	 <p><b>36 Yellow Wings</b></p> <table border="1"> <tr> <td>Size</td> <td>7gm</td> <td>13.5gm</td> <td>20gm</td> <td>26gm</td> </tr> <tr> <td>Available</td> <td>✓</td> <td>✓</td> <td>✓</td> <td>✓</td> </tr> </table>	Size	7gm	13.5gm	20gm	26gm	Available	✓	✓	✓	✓	 <p><b>37 Red Wings</b></p> <table border="1"> <tr> <td>Size</td> <td>7gm</td> <td>13.5gm</td> <td>20gm</td> <td>26gm</td> </tr> <tr> <td>Available</td> <td>✓</td> <td>✓</td> <td>✗</td> <td>✗</td> </tr> </table>	Size	7gm	13.5gm	20gm	26gm	Available	✓	✓	✗	✗	 <p><b>39 Harlequin</b></p> <table border="1"> <tr> <td>Size</td> <td>7gm</td> <td>13.5gm</td> <td>20gm</td> <td>26gm</td> </tr> <tr> <td>Available</td> <td>✓</td> <td>✓</td> <td>✓</td> <td>✓</td> </tr> </table>	Size	7gm	13.5gm	20gm	26gm	Available	✓	✓	✓	✓	 <p><b>44 Silver Xmas Tree</b></p> <table border="1"> <tr> <td>Size</td> <td>7gm</td> <td>13.5gm</td> <td>20gm</td> <td>26gm</td> </tr> <tr> <td>Available</td> <td>✓</td> <td>✓</td> <td>✗</td> <td>✗</td> </tr> </table>	Size	7gm	13.5gm	20gm	26gm	Available	✓	✓	✗	✗	 <p><b>45 Rainbow Trout</b></p> <table border="1"> <tr> <td>Size</td> <td>7gm</td> <td>13.5gm</td> <td>20gm</td> <td>26gm</td> </tr> <tr> <td>Available</td> <td>✓</td> <td>✓</td> <td>✓</td> <td>✓</td> </tr> </table>	Size	7gm	13.5gm	20gm	26gm	Available	✓	✓	✓	✓	 <p><b>46 Brown Trout</b></p> <table border="1"> <tr> <td>Size</td> <td>7gm</td> <td>13.5gm</td> <td>20gm</td> <td>26gm</td> </tr> <tr> <td>Available</td> <td>✓</td> <td>✓</td> <td>✓</td> <td>✓</td> </tr> </table>	Size	7gm	13.5gm	20gm	26gm	Available	✓	✓	✓	✓
Size	7gm	13.5gm	20gm	26gm																																																																								
Available	✓	✓	✓	✓																																																																								
Size	7gm	13.5gm	20gm	26gm																																																																								
Available	✓	✓	✓	✓																																																																								
Size	7gm	13.5gm	20gm	26gm																																																																								
Available	✓	✓	✗	✗																																																																								
Size	7gm	13.5gm	20gm	26gm																																																																								
Available	✓	✓	✓	✓																																																																								
Size	7gm	13.5gm	20gm	26gm																																																																								
Available	✓	✓	✗	✗																																																																								
Size	7gm	13.5gm	20gm	26gm																																																																								
Available	✓	✓	✓	✓																																																																								
Size	7gm	13.5gm	20gm	26gm																																																																								
Available	✓	✓	✓	✓																																																																								
 <p><b>57 Hot Canary</b></p> <table border="1"> <tr> <td>Size</td> <td>7gm</td> <td>13.5gm</td> <td>20gm</td> <td>26gm</td> </tr> <tr> <td>Available</td> <td>✓</td> <td>✓</td> <td>✓</td> <td>✗</td> </tr> </table>	Size	7gm	13.5gm	20gm	26gm	Available	✓	✓	✓	✗	 <p><b>63 Pretty Fish</b></p> <table border="1"> <tr> <td>Size</td> <td>7gm</td> <td>13.5gm</td> <td>20gm</td> <td>26gm</td> </tr> <tr> <td>Available</td> <td>✓</td> <td>✓</td> <td>✓</td> <td>✓</td> </tr> </table>	Size	7gm	13.5gm	20gm	26gm	Available	✓	✓	✓	✓	 <p><b>67 Bull Frog</b></p> <table border="1"> <tr> <td>Size</td> <td>7gm</td> <td>13.5gm</td> <td>20gm</td> <td>26gm</td> </tr> <tr> <td>Available</td> <td>✓</td> <td>✓</td> <td>✓</td> <td>✓</td> </tr> </table>	Size	7gm	13.5gm	20gm	26gm	Available	✓	✓	✓	✓	 <p><b>72 Eliminator</b></p> <table border="1"> <tr> <td>Size</td> <td>7gm</td> <td>13.5gm</td> <td>20gm</td> <td>26gm</td> </tr> <tr> <td>Available</td> <td>✓</td> <td>✓</td> <td>✓</td> <td>✓</td> </tr> </table>	Size	7gm	13.5gm	20gm	26gm	Available	✓	✓	✓	✓	 <p><b>74 Tricolour</b></p> <table border="1"> <tr> <td>Size</td> <td>7gm</td> <td>13.5gm</td> <td>20gm</td> <td>26gm</td> </tr> <tr> <td>Available</td> <td>✓</td> <td>✓</td> <td>✓</td> <td>✓</td> </tr> </table>	Size	7gm	13.5gm	20gm	26gm	Available	✓	✓	✓	✓	 <p><b>75 Foxy Lady</b></p> <table border="1"> <tr> <td>Size</td> <td>7gm</td> <td>13.5gm</td> <td>20gm</td> <td>26gm</td> </tr> <tr> <td>Available</td> <td>✓</td> <td>✓</td> <td>✓</td> <td>✓</td> </tr> </table>	Size	7gm	13.5gm	20gm	26gm	Available	✓	✓	✓	✓	 <p><b>81 Pink Fish</b></p> <table border="1"> <tr> <td>Size</td> <td>7gm</td> <td>13.5gm</td> <td>20gm</td> <td>26gm</td> </tr> <tr> <td>Available</td> <td>✓</td> <td>✓</td> <td>✗</td> <td>✗</td> </tr> </table>	Size	7gm	13.5gm	20gm	26gm	Available	✓	✓	✗	✗
Size	7gm	13.5gm	20gm	26gm																																																																								
Available	✓	✓	✓	✗																																																																								
Size	7gm	13.5gm	20gm	26gm																																																																								
Available	✓	✓	✓	✓																																																																								
Size	7gm	13.5gm	20gm	26gm																																																																								
Available	✓	✓	✓	✓																																																																								
Size	7gm	13.5gm	20gm	26gm																																																																								
Available	✓	✓	✓	✓																																																																								
Size	7gm	13.5gm	20gm	26gm																																																																								
Available	✓	✓	✓	✓																																																																								
Size	7gm	13.5gm	20gm	26gm																																																																								
Available	✓	✓	✓	✓																																																																								
Size	7gm	13.5gm	20gm	26gm																																																																								
Available	✓	✓	✗	✗																																																																								
 <p><b>102 Bengal Tiger</b></p> <table border="1"> <tr> <td>Size</td> <td>7gm</td> <td>13.5gm</td> <td>20gm</td> <td>26gm</td> </tr> <tr> <td>Available</td> <td>✓</td> <td>✓</td> <td>✓</td> <td>✓</td> </tr> </table>	Size	7gm	13.5gm	20gm	26gm	Available	✓	✓	✓	✓	 <p><b>103 Lovettia</b></p> <table border="1"> <tr> <td>Size</td> <td>7gm</td> <td>13.5gm</td> <td>20gm</td> <td>26gm</td> </tr> <tr> <td>Available</td> <td>✓</td> <td>✓</td> <td>✓</td> <td>✗</td> </tr> </table>	Size	7gm	13.5gm	20gm	26gm	Available	✓	✓	✓	✗	 <p><b>104 Gold Panther</b></p> <table border="1"> <tr> <td>Size</td> <td>7gm</td> <td>13.5gm</td> <td>20gm</td> <td>26gm</td> </tr> <tr> <td>Available</td> <td>✓</td> <td>✓</td> <td>✓</td> <td>✗</td> </tr> </table>	Size	7gm	13.5gm	20gm	26gm	Available	✓	✓	✓	✗	 <p><b>105 Christmas Beetle</b></p> <table border="1"> <tr> <td>Size</td> <td>7gm</td> <td>13.5gm</td> <td>20gm</td> <td>26gm</td> </tr> <tr> <td>Available</td> <td>✓</td> <td>✓</td> <td>✓</td> <td>✗</td> </tr> </table>	Size	7gm	13.5gm	20gm	26gm	Available	✓	✓	✓	✗	 <p><b>106 Tribal</b></p> <table border="1"> <tr> <td>Size</td> <td>7gm</td> <td>13.5gm</td> <td>20gm</td> <td>26gm</td> </tr> <tr> <td>Available</td> <td>✓</td> <td>✓</td> <td>✓</td> <td>✗</td> </tr> </table>	Size	7gm	13.5gm	20gm	26gm	Available	✓	✓	✓	✗	 <p><b>107 TJ Special</b></p> <table border="1"> <tr> <td>Size</td> <td>7gm</td> <td>13.5gm</td> <td>20gm</td> <td>26gm</td> </tr> <tr> <td>Available</td> <td>✓</td> <td>✓</td> <td>✓</td> <td>✗</td> </tr> </table>	Size	7gm	13.5gm	20gm	26gm	Available	✓	✓	✓	✗	 <p><b>108 Wakasagi</b></p> <table border="1"> <tr> <td>Size</td> <td>7gm</td> <td>13.5gm</td> <td>20gm</td> <td>26gm</td> </tr> <tr> <td>Available</td> <td>✓</td> <td>✓</td> <td>✓</td> <td>✗</td> </tr> </table>	Size	7gm	13.5gm	20gm	26gm	Available	✓	✓	✓	✗
Size	7gm	13.5gm	20gm	26gm																																																																								
Available	✓	✓	✓	✓																																																																								
Size	7gm	13.5gm	20gm	26gm																																																																								
Available	✓	✓	✓	✗																																																																								
Size	7gm	13.5gm	20gm	26gm																																																																								
Available	✓	✓	✓	✗																																																																								
Size	7gm	13.5gm	20gm	26gm																																																																								
Available	✓	✓	✓	✗																																																																								
Size	7gm	13.5gm	20gm	26gm																																																																								
Available	✓	✓	✓	✗																																																																								
Size	7gm	13.5gm	20gm	26gm																																																																								
Available	✓	✓	✓	✗																																																																								
Size	7gm	13.5gm	20gm	26gm																																																																								
Available	✓	✓	✓	✗																																																																								
 <p><b>121 Pinky</b></p> <table border="1"> <tr> <td>Size</td> <td>7gm</td> <td>13.5gm</td> <td>20gm</td> <td>26gm</td> </tr> <tr> <td>Available</td> <td>✓</td> <td>✓</td> <td>✓</td> <td>✓</td> </tr> </table>	Size	7gm	13.5gm	20gm	26gm	Available	✓	✓	✓	✓	 <p><b>122 Purple Haze</b></p> <table border="1"> <tr> <td>Size</td> <td>7gm</td> <td>13.5gm</td> <td>20gm</td> <td>26gm</td> </tr> <tr> <td>Available</td> <td>✓</td> <td>✓</td> <td>✓</td> <td>✓</td> </tr> </table>	Size	7gm	13.5gm	20gm	26gm	Available	✓	✓	✓	✓	 <p><b>123 Black Thunder</b></p> <table border="1"> <tr> <td>Size</td> <td>7gm</td> <td>13.5gm</td> <td>20gm</td> <td>26gm</td> </tr> <tr> <td>Available</td> <td>✓</td> <td>✓</td> <td>✓</td> <td>✓</td> </tr> </table>	Size	7gm	13.5gm	20gm	26gm	Available	✓	✓	✓	✓	 <p><b>124 Green Grenade</b></p> <table border="1"> <tr> <td>Size</td> <td>7gm</td> <td>13.5gm</td> <td>20gm</td> <td>26gm</td> </tr> <tr> <td>Available</td> <td>✗</td> <td>✓</td> <td>✓</td> <td>✗</td> </tr> </table>	Size	7gm	13.5gm	20gm	26gm	Available	✗	✓	✓	✗	 <p><b>125 Bleeding Pearl</b></p> <table border="1"> <tr> <td>Size</td> <td>7gm</td> <td>13.5gm</td> <td>20gm</td> <td>26gm</td> </tr> <tr> <td>Available</td> <td>✗</td> <td>✓</td> <td>✓</td> <td>✗</td> </tr> </table>	Size	7gm	13.5gm	20gm	26gm	Available	✗	✓	✓	✗	 <p><b>126 Smashing Pumpkin</b></p> <table border="1"> <tr> <td>Size</td> <td>7gm</td> <td>13.5gm</td> <td>20gm</td> <td>26gm</td> </tr> <tr> <td>Available</td> <td>✓</td> <td>✓</td> <td>✓</td> <td>✓</td> </tr> </table>	Size	7gm	13.5gm	20gm	26gm	Available	✓	✓	✓	✓	 <p><b>127 KG Special</b></p> <table border="1"> <tr> <td>Size</td> <td>7gm</td> <td>13.5gm</td> <td>20gm</td> <td>26gm</td> </tr> <tr> <td>Available</td> <td>✓</td> <td>✓</td> <td>✓</td> <td>✗</td> </tr> </table>	Size	7gm	13.5gm	20gm	26gm	Available	✓	✓	✓	✗
Size	7gm	13.5gm	20gm	26gm																																																																								
Available	✓	✓	✓	✓																																																																								
Size	7gm	13.5gm	20gm	26gm																																																																								
Available	✓	✓	✓	✓																																																																								
Size	7gm	13.5gm	20gm	26gm																																																																								
Available	✓	✓	✓	✓																																																																								
Size	7gm	13.5gm	20gm	26gm																																																																								
Available	✗	✓	✓	✗																																																																								
Size	7gm	13.5gm	20gm	26gm																																																																								
Available	✗	✓	✓	✗																																																																								
Size	7gm	13.5gm	20gm	26gm																																																																								
Available	✓	✓	✓	✓																																																																								
Size	7gm	13.5gm	20gm	26gm																																																																								
Available	✓	✓	✓	✗																																																																								
 <p><b>135 Black Betty</b></p> <table border="1"> <tr> <td>Size</td> <td>7gm</td> <td>13.5gm</td> <td>20gm</td> <td>26gm</td> </tr> <tr> <td>Available</td> <td>✓</td> <td>✓</td> <td>✓</td> <td>✓</td> </tr> </table>	Size	7gm	13.5gm	20gm	26gm	Available	✓	✓	✓	✓	 <p><b>450 Spotted Rainbow</b></p> <table border="1"> <tr> <td>Size</td> <td>7gm</td> <td>13.5gm</td> <td>20gm</td> <td>26gm</td> </tr> <tr> <td>Available</td> <td>✓</td> <td>✓</td> <td>✓</td> <td>✓</td> </tr> </table>	Size	7gm	13.5gm	20gm	26gm	Available	✓	✓	✓	✓	 <p><b>BR Bloody Ripper</b></p> <table border="1"> <tr> <td>Size</td> <td>7gm</td> <td>13.5gm</td> <td>20gm</td> <td>26gm</td> </tr> <tr> <td>Available</td> <td>✓</td> <td>✓</td> <td>✓</td> <td>✓</td> </tr> </table>	Size	7gm	13.5gm	20gm	26gm	Available	✓	✓	✓	✓	 <p><b>HO Holographic</b></p> <table border="1"> <tr> <td>Size</td> <td>7gm</td> <td>13.5gm</td> <td>20gm</td> <td>26gm</td> </tr> <tr> <td>Available</td> <td>✓</td> <td>✓</td> <td>✓</td> <td>✗</td> </tr> </table>	Size	7gm	13.5gm	20gm	26gm	Available	✓	✓	✓	✗	 <p><b>FLC Luminous Chartreuse</b></p> <table border="1"> <tr> <td>Size</td> <td>7gm</td> <td>13.5gm</td> <td>20gm</td> <td>26gm</td> </tr> <tr> <td>Available</td> <td>✓</td> <td>✓</td> <td>✓</td> <td>✓</td> </tr> </table>	Size	7gm	13.5gm	20gm	26gm	Available	✓	✓	✓	✓	 <p><b>FLP Luminous Pink</b></p> <table border="1"> <tr> <td>Size</td> <td>7gm</td> <td>13.5gm</td> <td>20gm</td> <td>26gm</td> </tr> <tr> <td>Available</td> <td>✓</td> <td>✓</td> <td>✓</td> <td>✓</td> </tr> </table>	Size	7gm	13.5gm	20gm	26gm	Available	✓	✓	✓	✓	 <p><b>PP Phosphorus Pearl</b></p> <table border="1"> <tr> <td>Size</td> <td>7gm</td> <td>13.5gm</td> <td>20gm</td> <td>26gm</td> </tr> <tr> <td>Available</td> <td>✗</td> <td>✓</td> <td>✓</td> <td>✗</td> </tr> </table>	Size	7gm	13.5gm	20gm	26gm	Available	✗	✓	✓	✗
Size	7gm	13.5gm	20gm	26gm																																																																								
Available	✓	✓	✓	✓																																																																								
Size	7gm	13.5gm	20gm	26gm																																																																								
Available	✓	✓	✓	✓																																																																								
Size	7gm	13.5gm	20gm	26gm																																																																								
Available	✓	✓	✓	✓																																																																								
Size	7gm	13.5gm	20gm	26gm																																																																								
Available	✓	✓	✓	✗																																																																								
Size	7gm	13.5gm	20gm	26gm																																																																								
Available	✓	✓	✓	✓																																																																								
Size	7gm	13.5gm	20gm	26gm																																																																								
Available	✓	✓	✓	✓																																																																								
Size	7gm	13.5gm	20gm	26gm																																																																								
Available	✗	✓	✓	✗																																																																								
 <p><b>Y94 Yellow Sunset</b></p> <table border="1"> <tr> <td>Size</td> <td>7gm</td> <td>13.5gm</td> <td>20gm</td> <td>26gm</td> </tr> <tr> <td>Available</td> <td>✓</td> <td>✓</td> <td>✓</td> <td>✓</td> </tr> </table>	Size	7gm	13.5gm	20gm	26gm	Available	✓	✓	✓	✓	 <p><b>Y123 Eruption</b></p> <table border="1"> <tr> <td>Size</td> <td>7gm</td> <td>13.5gm</td> <td>20gm</td> <td>26gm</td> </tr> <tr> <td>Available</td> <td>✓</td> <td>✓</td> <td>✓</td> <td>✓</td> </tr> </table>	Size	7gm	13.5gm	20gm	26gm	Available	✓	✓	✓	✓	 <p><b>Y131 Yellow Mongrel</b></p> <table border="1"> <tr> <td>Size</td> <td>7gm</td> <td>13.5gm</td> <td>20gm</td> <td>26gm</td> </tr> <tr> <td>Available</td> <td>✓</td> <td>✓</td> <td>✓</td> <td>✓</td> </tr> </table>	Size	7gm	13.5gm	20gm	26gm	Available	✓	✓	✓	✓	<p><b>RIGGING: 7gm-13.5gm-26gm</b></p> <p>Thread the line through the lure and then either; tie to split ring attached to a hook or thread through a bead and tie to directly to hook. <b>RIGGING: 20gm</b> With Dual tow points the 20gm allow the lure to be fished at different depths. Running the line (a) will see the lure swim at 2.2 m. Running the line through the special tow point on the back of the lure (b) will make the lure dive to 3.3 m.</p>  <p>3kg/6lb line    Small bead or split shot</p> <p>(a)    (b)    20gm</p> <p><b>UV</b> Ultra Violet Paint</p>																																											
Size	7gm	13.5gm	20gm	26gm																																																																								
Available	✓	✓	✓	✓																																																																								
Size	7gm	13.5gm	20gm	26gm																																																																								
Available	✓	✓	✓	✓																																																																								
Size	7gm	13.5gm	20gm	26gm																																																																								
Available	✓	✓	✓	✓																																																																								





## BLUEWATER STICKBAITS

The Floating and Sinking Stickbaits from the Bluewater stable are built tough to take on the most ferocious predators when targeting Bluewater species such as GTs, Tuna and Tarpon etc. The Stickbait is hand made and hand crafted using a super clear hand poured resin and features a heavy duty wire through construction.

### BLUEWATER FLOATING STICKBAITS



01 - Abalone Blue



02 - Abalone Gold



03 - Abalone Black



### BLUEWATER SINKING STICKBAITS



01 - Abalone Blue



02 - Abalone Gold



03 - Abalone Purple



04 - Abalone Red Head

## BLUEWATER KNIVES

The Bluewater Fillet Knives feature a superior German stainless steel mid-flex blade, non stick coating on blade, soft TPR non slip handle and include a webbing sheath.



Fillet Knife 18cm & 21cm





## BLUEWATER SPEED SKIRT

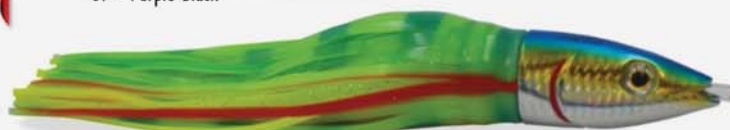
The Bluewater Speed Skirts are a high speed trolling skirt capable of searching waters at 15-18 knots making them ideal for Tuna, Wahoo and other high speed pelagic species.

LENGTH MM	WEIGHT GMS	DIVING DEPTH	ITEM CODE
240	115	TROLLING	03SS..

BLUEWATER



01 - Purple Black



02 - Lumo Green



03 - Lumo



04 - Pink

### COLOUR RANGE



## BLUEWATER SPEED PLUGS

The Bluewater Speed Plugs are constructed from a hard polyurethane material, are keel weighted in the front for casting, have a luminous ball in the body section and feature a rubber hook lock that secures the rig.

LENGTH MM	WEIGHT GMS	DIVING DEPTH	ITEM CODE
150	88	FLOATING	03SP..



01 - Smoke



03 - Green



02 - Purple



04 - Blue

### COLOUR RANGE



## BLUEWATER SAURY LURE

The Saury lure is designed to mimic the popular pelagic baitfish and will be in its element chasing Tuna, Mackerel and all other predatory species. The Saury comes with a 8/0 VMC single hook on the front, a 9/0 single on the rear, with heavy duty rings and hardware. The heavy duty, stainless steel, wired through construction ensures the lure will stand up to the toughest sports fish. A reinforced bib design compliments the nose wired tow point to ensure the lures swim perfectly out of the box and require minimal tuning after use.

The Saury is available in 10 colours and some of those feature the patented "LiveGlo" fluorescent technology. The technology incorporates luminous and ultra violet additives that are somewhat invisible to the human eye but not to predatory fish. The innovation and design in Lance Butler's lures is something that sets his lures apart from most mainstream lures. Enjoy using these quality Australian designed lures.



LENGTH MM	WEIGHT GMS	DIVING DEPTH	HOOK SIZE	SWIMMING ACTION	ITEM CODE
230	108	5mt/15ft	F 8/0-R 9/0	WOBBLE	03CBS23..



### COLOUR RANGE

LIVEGLO Fluorescent Technology incorporating luminous, fluorescent and ultraviolet additives for maximum impact.



01 - Gold / Black



23 - Saur



04 - Yellowfin



24 - Black



07 - Guns "N" Roses



25 - Blue Laser



08 - Red Head



72 - Splice



22 - Slimy Mackerel



78 - Oil Slick



## BLUEWATER MINNOW LURE



Scan for lure action

The Classic Bluewater Minnow was designed for hardcore Bluewater trolling enthusiasts. Fitted with a one-piece through wire frame for integrity, whilst the heavy walled body is glued & double-welded for maximum strength; even when clamped between the jaws of a monster. Ideal for all Bluewater trolling purposes; these lures will readily take Wahoo, Mackerel, Tuna, Mahi Mahi, GT's, Coral Trout, Kingfish, Tailor, Salmon, Bonito and most other pelagic and reef species.

Available in 3 sizes: 120mm, 160mm and 200mm - making them ideal for both inshore and offshore trolling. Every lure is fitted with VMC 3X strong permasteel trebles and Superflex HD stainless split rings. Ideal for all trolling speeds from 2 to 10 knots; the Bluewater Minnow is the first choice of pros and amateurs alike.

**BW 200**

**BW 160**

**BW 120**

**BW120**

LENGTH MM	WEIGHT GMS	DIVING DEPTH	ITEM CODE
120	19	3mt/10ft	03CB12..

**BW160**

LENGTH MM	WEIGHT GMS	DIVING DEPTH	ITEM CODE
160	34	3mt/10ft	03CB165..
160	34	5mt/15ft	03CB16D..

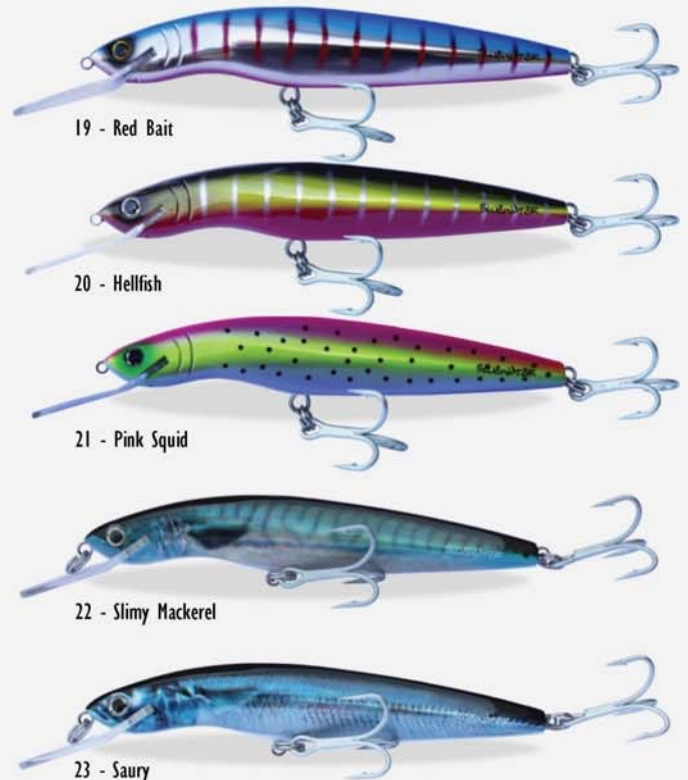
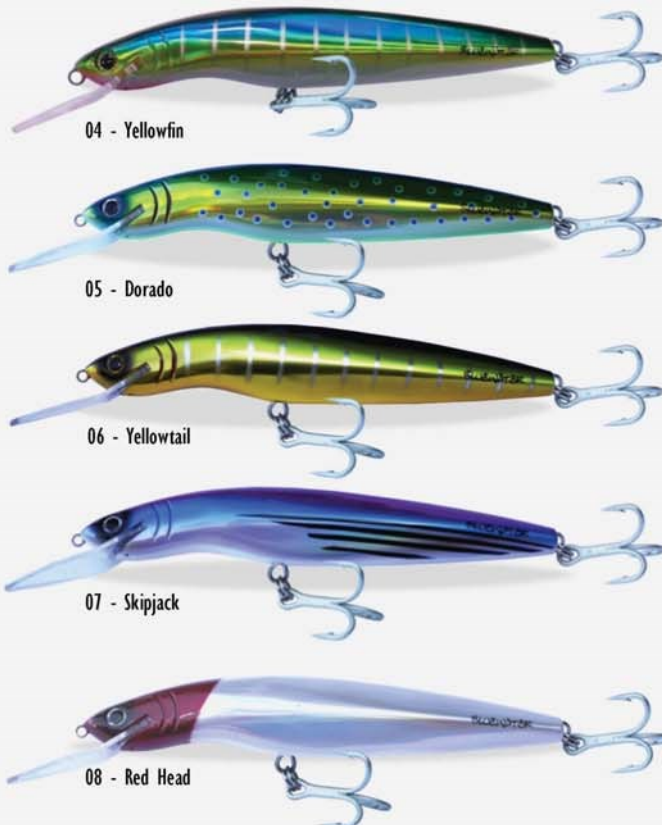
**BW200**

LENGTH MM	WEIGHT GMS	DIVING DEPTH	ITEM CODE
200	60	3mt/10ft	03CB20..
200	60	5mt/15ft	03CB20D..

### COLOUR RANGE



LIVEGLO Fluorescent Technology incorporating luminous, fluorescent and ultraviolet additives for maximum impact.





## BLUEWATER TROLLING SKIRT LURES

The Bluewater Trolling Skirts feature unique hand poured heads, attractive graphics and finish detailing our trademark Bluewater logo in the eye, supple silicone skirt, quality finish to the resin head and skirt attachment, two different swimming actions, tried and tested fish catching colour combinations.

The 6", 8", and 10" Bluewater lures are considered small to medium in size and ideally would perform better if rigged with a single hook. The 8" and 10" version could accommodate a two hook shackle rig, however, if the gauge of the hook is heavy this could dampen the action of the lure. It is recommended that chafe tube is used over the leader through the lure head to avoid abrasion, and a stopper used above the rigging inside the lure skirt to stop the rigging pressing against the head at the point of connection.

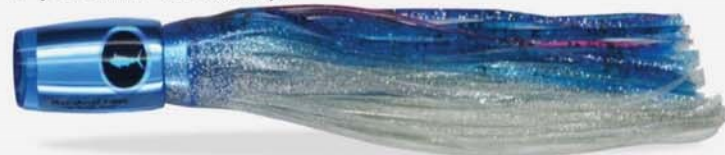
BLUEWATER

6" / 150mm - PLUNGER Head Style



BLUEWATER

8" / 200mm - POP Head Style



BLUEWATER

10" / 250mm - PLUNGER Head Style



## COLOUR RANGE



01 - Chartreuse / Orange



02 - Lumo



03 - Blue / Silver / Pink



04 - Pink



05 - Black / Red



06 - Blue / Black / Silver



07 - Purple / Black



08 - Lumo Green

Size	Head Type	Head Colour	Skirt Colour
6"/15cm - 8"/20cm - 10"/25cm	POP / PLUNGER	Chartreuse Foil	01 - Chartreuse / Orange
6"/15cm - 8"/20cm - 10"/25cm	POP / PLUNGER	Lumo Crinkle Foil	02 - Lumo
6"/15cm - 8"/20cm - 10"/25cm	POP / PLUNGER	Black Crinkle Foil	03 - Blue / Silver / Pink
6"/15cm - 8"/20cm - 10"/25cm	POP / PLUNGER	Pink Crinkle Foil	04 - Pink
6"/15cm - 8"/20cm - 10"/25cm	POP / PLUNGER	Black Crinkle Foil	05 - Black / Red
6"/15cm - 8"/20cm - 10"/25cm	POP / PLUNGER	Blue Mirror	06 - Blue / Black / Silver
6"/15cm - 8"/20cm - 10"/25cm	POP / PLUNGER	Purple Abalone	07 - Purple / Black
6"/15cm - 8"/20cm - 10"/25cm	POP / PLUNGER	Green Mirror	08 - Lumo Green





## BLUEWATER ROCKET POPPER



Scan for lure action

The Bluewater P163 Rocket Popper is an extremely versatile lure that can be fished in a number of different ways. The P163 features a special tail-bias weighting system that serves two main purposes. The heavy tail weight causes the lure to fly straight and true through the air - meaning the P163 casts like a rocket. The tail weighting also causes the lure to sit nose-up in the water during the retrieve. This nose-up position causes the lure to literally skip and dart along the surface during a straight, high-speed retrieve; perfectly imitating a fleeing Garfish or Saurie. The P163 can also be fished with a slow, jerking motion which will see it swim with a "walk the dog" action, much like a Stickbait. Ideal for all bluewater casting, and will appeal to all large pelagic species.



LENGTH MM	WEIGHT GMS	DIVING DEPTH	ITEM CODE
163	68	SURFACE	03CBP163...

### COLOUR RANGE



01 - Gold / Black



13 - Blue Pillie



04 - Yellowfin



22 - Slimy Mackerel



08 - Red Head



23 - Saury





## STUMPJUMPER LURES

The name StumpJumper is synonymous with the key benefit of the design of this lure. Used correctly it will help you avoid the frustration of being snagged. Here's how; when trolling, hold the tip close to the water and at a 90 degree angle out from the boat to allow the current and the in-built buoyancy of the lure to lift and clear the snag. With practice, the lure can be walked through most snags. Vary the length of line to stay in touch with the bottom. Bump the odd log and you know you are down there with the fish.

## REMOVEABLE BIB SYSTEM

The proven swimming action and unbelievable anti-snag capabilities of the StumpJumper are combined with an exclusive patented snap-lock bib that lets you instantly alter the lures action and characteristics by changing to different shaped bibs. With a choice of hot colours and flashing metallic finishes and subtle patterns, you can change the colours of the bibs to get the attention of the fish. Mix and match lure bibs and bodies in a system that makes StumpJumper the most innovative and effective lures available today.



To change curved bibs bend down and pull out.

Flat bibs pull straight out.

### A - BIBS



#### DEEP DIVING

4 Per pk

Size 1: A bib - 8mt

Size 2: A bib - 5mt

Size 3: A bib - 4mt

### B - BIBS



#### SHALLOW DIVING

4 Per pk

Size 1: B bib - 3mt

Size 2: B bib - 3mt

Size 3: B bib - 2mt

### MEGA



#### MULTI DEPTHS

2 Per pk

Mega: C bib - 4mt

Mega: A bib - 6mt

Mega: B bib - 10mt

## STUMPJUMPER LURE PACKS

The most popular selling and proven colours are in each lure pack.



Code: 37PBCOD

Includes: 3 x Size 1 lures



Code: 37PNATIVE

Includes: 3 x Size 2 lures



Code: 37PTROUT

Includes: 3 x Size 3 lures

## STUMPJUMPER COD FEET

The StumpJumper Fish Feet are shaped like Cod and are complete with gills and large mouth. They are lightweight and are made from hi-density EVA material that are shock and skid resistant.

Available in sizes: Adults: XS/M-L/XL Kids: M/L



## STUMPJUMPER HEADWEAR

StumpJumper Buffs are ideal for added sun protection. One size fits all.



## STUMPJUMPER FISHING SHIRT



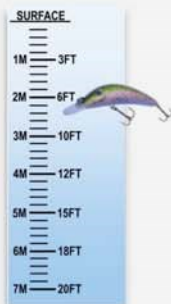
Available in sizes: S - M - L - XL - 2XL - 3XL



### FINESSE SIZE 3.5

The 3.5 Finesse Stumpjumper is the smallest in the range. It is available in 10 proven fish catching colours. The bib in the Finesse lure is fixed and it will dive up to 2mts to entice a wide variety of fish species, such as Bream, Trout and Redfin.

LENGTH MM	WEIGHT GMS	DIVING DEPTH	SWIMMING ACTION	ITEM CODE
45	4	2mt	WOBBLE	37J ...



#### COLOUR RANGE



01 - Sunrise



09 - Brazen Perch



13 - Blue Fire



18 - Blood Moon



20 - Crimson Flash



51 - Brown Trout

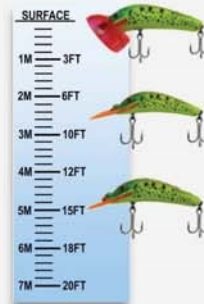


52 - Rainbow Trout

### FLIPPER SIZE 2.5

The Stumpjumper Flipper is a top water lure designed for as much splash as possible to entice surface strikes from large predatory fish. The Flipper is a versatile lure that can also accommodate bibs (supplied) from the standard size 2 lures that turn it into a diving lure that can run at shallow or deeper depths.

LENGTH MM	WEIGHT GMS	DIVING DEPTH	SWIMMING ACTION	ITEM CODE
68	14	MULTIPLE	SURFACE/DIVE	37SF ...



#### COLOUR RANGE



F2 - Trout Frog



F3 - Fluro Frog



F4 - Olive Frog

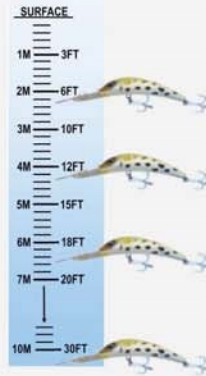


F5 - Black Knight



## STUMPJUMPER MEGA

The latest addition to the StumpJumper series of lures is the new Mega StumpJumper. This specialty lure is a serious lure for those chasing fish at specific depths. With the quality of technology evolving with side scan and almost TV quality pictures in sounders this lure allows anglers to hit specific depths with ease and slow troll in the strike zone for longer and better results. A patented removable bib system gives anglers every advantage now rather than relying on the fish to be over active and chasing a lure at a depth that the fish aren't.



LENGTH MM	WEIGHT GMS	DIVING DEPTH	SWIMMING ACTION	ITEM CODE
170	94	MULTIPLE	WOBBLE	375M ..



### TOW POINTS

Can be trolled from either lure nose, or bib points (deeper and wider action when towed from bib)

Lure Bib dives to 2m/6ft

C Bib dives to 4m/12ft

A Bib dives to 6m/18ft

B Bib dives to 10m/30ft+



## COLOUR RANGE



## STUMPJUMPER SIZE 1

LENGTH MM	WEIGHT GMS	SWIMMING ACTION	ITEM CODE
105	21	WOBBLE	3751 ..

Colour range over the page

B BIB 3m-10ft A BIB 8m-24ft



## STUMPJUMPER SIZE 2

LENGTH MM	WEIGHT GMS	SWIMMING ACTION	ITEM CODE
75	13	WOBBLE	3752 ..

Colour range over the page

B BIB 3m-10ft / A BIB 5m-15ft



## STUMPJUMPER SIZE 3

LENGTH MM	WEIGHT GMS	SWIMMING ACTION	ITEM CODE
55	6	WOBBLE	3753 ..

Colour range over the page

B BIB 2m-6ft / A BIB 4m-12ft

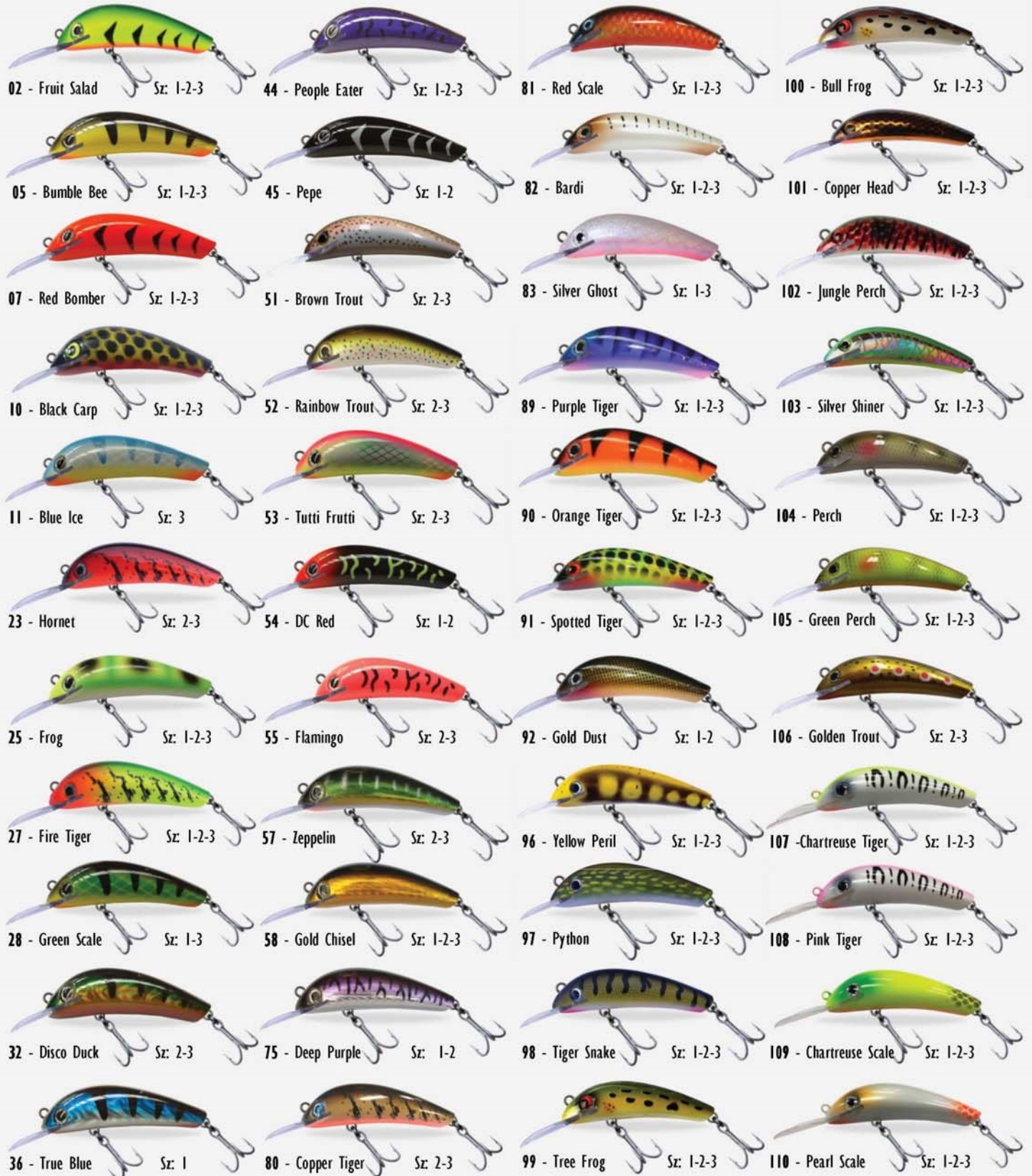




# STUMPJUMPER LURES

**JJ's**  
**StumpJumper**

## LURE COLOUR RANGE \*SIZE 1 - 2 - 3 \*Please note lure size availability





## CLASSIC 65



Scan for lure action

Despite it's size, the Classic 65 is built tough to handle strong fish in both fresh and saltwater. Ideal for casting and trolling.

**CL65**

LENGTH MM	WEIGHT GMS	DIVING DEPTH	SWIMMING ACTION	ITEM CODE
65	9	2mt/6ft	WOBBLE	02CL65..
65	9	3m/10ft	WOBBLE	02CL65D..

COLS - +6 / +10: 07-09-12-22-27-33-50-54



## CLASSIC 97



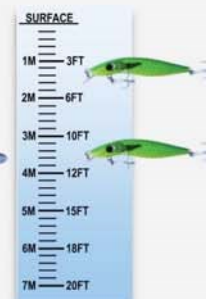
Scan for lure action

A perfect snack-sized lure for all predatory fish species in fresh and saltwater. Great for casting & trolling.

**CL97**

LENGTH MM	WEIGHT GMS	DIVING DEPTH	SWIMMING ACTION	ITEM CODE
97	14	1mt/3ft	WOBBLE	02CL97..
97	14	3m/10ft	WOBBLE	02CL97BRD..

COLS - +3 / +10: 07-09-12-15-22-24-27-33-4XG-50-54



## CLASSIC 120



Scan for lure action

Australia's No.1 Barra lure! Used for casting and trolling in all situations, the Classic 120 Barra has an unmatched tournament-winning heritage and is the first choice of all serious Barramundi anglers. A great all-rounder that will take most larger predators in both saltwater and freshwater.

**CL120**

LENGTH MM	WEIGHT GMS	DIVING DEPTH	SWIMMING ACTION	ITEM CODE
120	23	3mt/10ft	SUSPEND	02CL12SP..
120	23	1mt/3ft	WOBBLE	02CL12BR..
120	23	2mt/6ft	WOBBLE	02CL12BR6..
120	23	3mt/10ft	WOBBLE	02CL12BRD..
120	23	5mt/15ft	WOBBLE	02CL12BRDD..
120	23	7mt/20ft	WOBBLE	02CL12BRXD..

COLS - Suspending: 03-07-08-09-12-14-15-23-24-33-37-4XG-50-54

COLS - +6: 03-07-08-09-12-14-15-23-24-33-37- 4XG-50-54

COLS - +3 / +10 / +15: ALL COLOURS

COLS - +20: 07-08-09-12-19-22-28-33-37-4XG-50



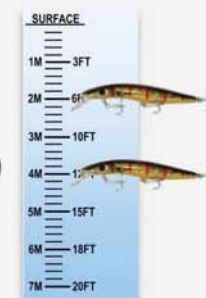
## CLASSIC 160

The Classic 160 is the second largest lure in the Classic range ideal lure for all large aggressive predators in fresh and saltwater. Built super heavy duty to handle big fish!

COLS - +3 / +10: 07-08-09-12-14-22-24-33-50-54

LENGTH MM	WEIGHT GMS	DIVING DEPTH	SWIMMING ACTION	ITEM CODE
160	29	1mt/3ft	WOBBLE	02CL16..
160	29	3mt/10ft	WOBBLE	02CL16D..

**CL160**





# CLASSIC LURES

*Classic Lures*

## COLOUR RANGE



01 - Fluro



12 - Gold Mullet Dazzler



27 - Blue Mullet Dazzler



4XG - XXXXtreme Gold



02 - Blue



14 - Elton John on Chrome



28 - Black Mullet Dazzler



50 - Splice



03 - Elton John



15 - Black Tracker



32 - Green Nitro Dazzler



51 - Diamond Scale Mullet



04 - Mullet



19 - Bobby Dazzler Gold



33 - Gold Nitro Dazzler



52 - Yellow Terra



05 - Tiger



21 - Bobby Dazzler Silver Green



35 - Purple Mullet Dazzler



53 - Teal Warrior



07 - Guns "N" Roses



22 - Bobby Dazzler Silver Purple



36 - Green Rainbow



54 - Flaming Pink



08 - Qantas



23 - Nitro



37 - Grey Ghost



09 - Bananafish



24 - Golden Streak



38 - Albino

## CLASSIC 3 PACKS

The Classic lure packs are certainly good value for money.

There are now 6 different value packs to choose from with the 3 most popular selling colours in each model.



CLASSIC 120 +3



CLASSIC 120 +6



CLASSIC 120 +10



CLASSIC 120 GHOST +3



CLASSIC 120 GHOST +10



CLASSIC 160 +10



## F18 MANTA RAY



Scan for lure action

The F18 Manta Ray has a specially designed bib that dives to 18 feet. Ideal for all deep trolling work.

LENGTH MM	WEIGHT GMS	DIVING DEPTH	SWIMMING ACTION	ITEM CODE
120	21	6mt/18ft	WOBBLE	02CLF18M...



F18M



### COLOUR RANGE



## CLASSIC F18



Scan for lure action

The F18 features a unique body shape with defined lateral wings that increase stability and help to create a highly effective action when cast & trolled.

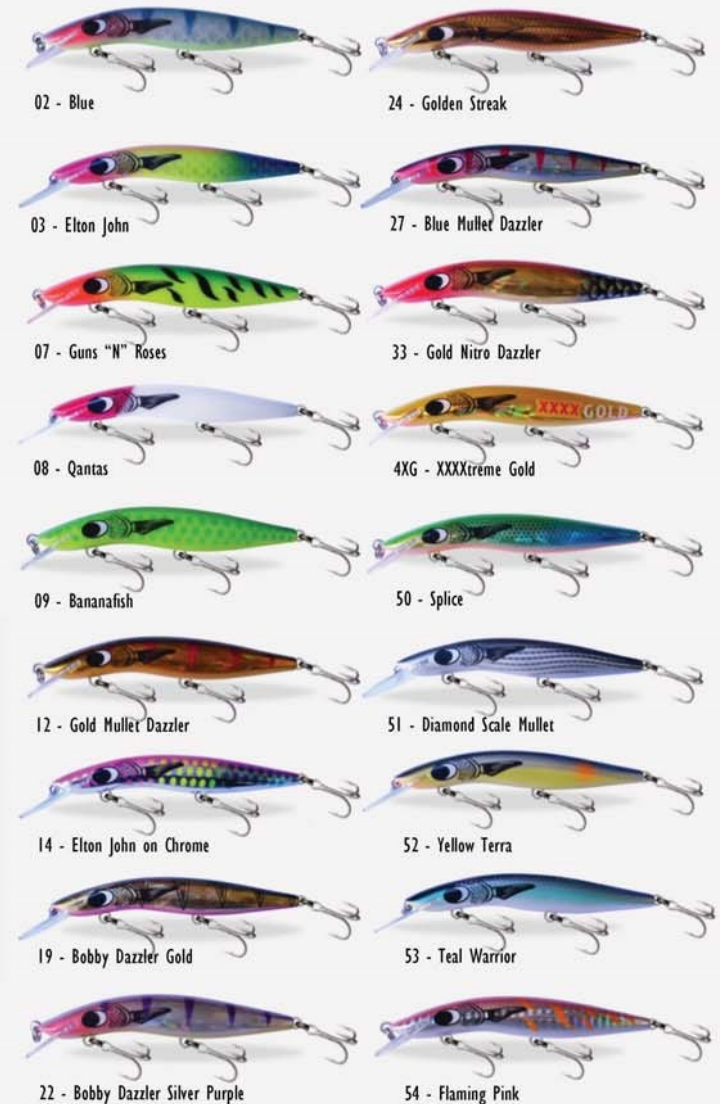
LENGTH MM	WEIGHT GMS	DIVING DEPTH	SWIMMING ACTION	ITEM CODE
120	21	2.5mt/8ft	WOBBLE	02CLF18...



F18



### COLOUR RANGE





# CLASSIC LURES

Classic Lures

## CLASSIC DR. EVIL



Scan for lure action

This super deep diver gets right down to where the big fish lie. The over size bib design aids in getting this lure down to a depth of over 20ft. The Dr. Evil is perfectly sized to attract strikes from both large and small predators, and makes for a superb trolling lure.

LENGTH MM	WEIGHT GMS	DIVING DEPTH	SWIMMING ACTION	ITEM CODE
90	24	7mt/20ft	WOBBLE	02CLDE90..

DE



## F18 MINI

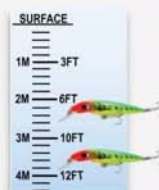


Scan for lure action

The F18 Mini features the same great fish catching action as the larger CLF18. Perfect for targeting Barra, Jacks, Bass, Flathead, Trevally and most other species.

LENGTH MM	WEIGHT GMS	DIVING DEPTH	SWIMMING ACTION	ITEM CODE
80	12	2mt/6ft	WOBBLE	02CLF18MIN..
80	12	3mt/10ft	WOBBLE	02CLF18MIND..

F18MI



### COLOUR RANGE



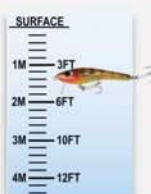
## JUST UNDER

LENGTH MM	WEIGHT GMS	DIVING DEPTH	SWIMMING ACTION	ITEM CODE
80	12	.3mt/1ft	WOBBLE	02CLJ..

Scan for lure action



Diving to a maximum depth of 1-foot or "just under" the surface, this lure takes spectacular strikes from many top water feeders. Ideal for casting around shallow timber, weed, lilies or flats.



### COLOUR RANGE





## CLASSIC 200



The Classic 200 is the newest and largest lure in the Classic lure stable and is available in 2 dive depts, 1mt and 3mt.

GH01 - Ghost Casper



GH02 - Ghost Gold



GH05 - Ghost Bananafish

GH06 - Ghost Tiger Lily



07 - Guns "N" Roses



08 - Qantas

12 - Gold Mullet Dazzler



50 - Splice

LENGTH MM	WEIGHT GMS	DIVING DEPTH	ITEM CODE
200	85	1mt/3ft	02CL20..
200	85	3mt/10ft	02CL20D..

## CLASSIC GHOST

This Classic Ghost lure has a dual moulded body which allows for a range of lifelike finishes and enhanced colour designs that have proven even more effective than existing colour ranges. In addition to the Ghost like finish, the lures are fitted with heavy-duty hardware and strong VMC treble hooks. These are a great all-round lure that will take most larger predators in both fresh & saltwater and they are the first choice of lure, for all serious anglers.

LENGTH MM	WEIGHT GMS	DIVING DEPTH	SWIMMING ACTION	ITEM CODE
120	23	1mt/3ft	WOBBLE	02CLG..
120	23	3mt/10ft	WOBBLE	02CLGD..
120	23	5mt/15ft	WOBBLE	02CLGDD..

CL120

### COLOUR RANGE



GH01 - Ghost Casper



GH02 - Ghost Gold



GH03 - Ghost Blue



GH04 - Ghost Guns N Roses



GH05 - Ghost Bananafish



GH06 - Ghost Tiger Lily



GH07 - Ghost Cooked Prawn



GH09 - Ghost Elton



GH10 - Ghost Olivia



GH11 - Ghost Splice



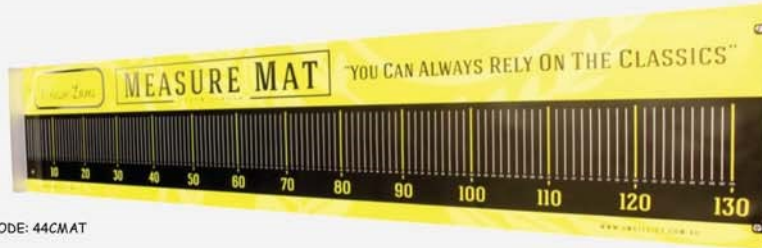


# CLASSIC PRODUCTS



## CLASSIC MEASURE MAT

The Classic Measure Mats are very handy for the safe handling and release of fish. The measure mat protects the fish as you lay it down to measure and to photograph your catch. A tip is to wet the mat prior, to further ensure that the protective slime on the fish is not affected.



CODE: 44CMAT

## CLASSIC FISH GRIPPER

The Classic Fish Gripper securely holds fish eliminating injury to the anglers and fish. The quick release mechanism is a one-hand operation that opens and closes with ease. It also comes with a wrist lanyard, is corrosion proof, durable and easy to clean.

CODE: 026RIP



## CLASSIC APPAREL

The Classic apparel range includes caps, buffs and fishing shirts.

Sizes available:

- Small
- Medium
- Large
- X Large
- XX Large
- XXX Large

SHIRT CODE: 44CFS



## CLASSIC CAP

CAP CODE: 44CLCAP



## CLASSIC SHIRT



## CLASSIC BUFF



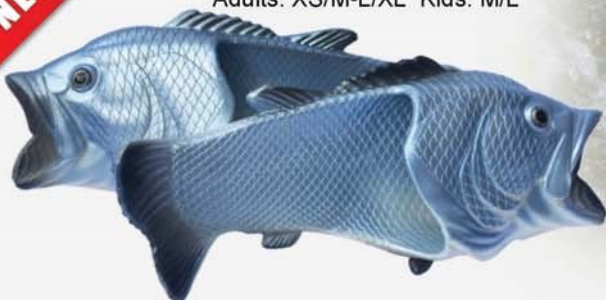
BUFF CODE: 44CLBUFF

## CLASSIC BARRA FEET

The Classic Fish Feet are shaped like the Barramundi and are complete with gills and large mouth. They are lightweight and are made from hi-density EVA material that are shock and skid resistant.



Barramundi style  
Available in sizes:  
Adults: XS/M-L/XL Kids: M/L



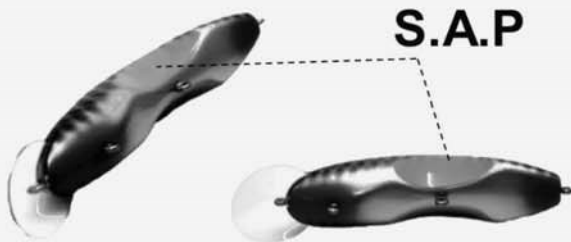


## ABOUT WARLOCK HARDBAITS

The Warlock range of lures are one of the most unique hard-baits currently available on the market. The key feature of the Warlock series profile is our signature S.A.P.™ or Sonic-Amplifying-Panels that are moulded into the underside of the lure's flanks.

These scalloped panels reflect ultra-strong micro-vibrations that create an irresistible sonic footprint that is unlike any other hardbait on today's market. This series swims with a tight, rolling action and unsurpassed cycle rate, sending out a strong signal that triggers an instant strike instinct in any nearby predators. Quite simply, the Warlock is unlike any hardbait you've ever used before - the fish just won't know what's hit them when you unleash the Warlock series on your local waterway.

*Our patented S.A.P. (Sonic Amplifying Panel) system reflects strong micro-vibrations that give our Warlock Series lures a unique sonic footprint underwater.*



## WARLOCK 52 3PKS



+2 Code: 07WLP01

FRESHWATER



+2 Code: 07WLP03

ESTUARY



## WARLOCK 39 & 52



LENGTH MM	WEIGHT GMS	DIVING DEPTH	ITEM CODE
39	4	1mt/3ft	07WL39..
52	5	2mt/6ft	07WL52..



81 - Crimson Flash



P12 - Bright Knight



P14 - Golden Bait



T3 - Brook Trout



P03 - Brown Shrimp



P13 - Pink Knight



T2 - Rainbow Trout



## WARLOCK 68

LENGTH MM	WEIGHT GMS	DIVING DEPTH	ITEM CODE
68	12	2.5mt/8ft	07WL68..



03 - Elton John

Sizes: 68 - 80



12 - Gold Mullet Dazzler

Sizes: 68 - 80 - 125



33 - Gold Nitro Dazzler

Sizes: 68 - 80 - 125



81 - Crimson Flash

Sizes: 68 - 80 - 125



07 - Guns "N" Roses

Sizes: 68 - 80 - 125



28 - Black Mullet Dazzler

Sizes: 68 - 80 - 125



35 - Purple Mullet Dazzler

Sizes: 68 - 80 - 125



GB - Gold / Black

Sizes: 125



## WARLOCK 80

LENGTH MM	WEIGHT GMS	DIVING DEPTH	ITEM CODE
80	12	2.5mt/8ft	07WL80..
80	12	4m/12ft	07WL80D..



## WARLOCK 125

LENGTH MM	WEIGHT GMS	DIVING DEPTH	ITEM CODE
125	30	3m/10ft	07WL125..
125	30	5m/10ft	07WL125D..



## WARLOCK BASS HOPPER

MODEL	WEIGHT	LENGTH	ACTION	CODE
BASS HOPPER	16GM	66MM	SURFACE	07WBH...

The Warlock Bass Hopper is the baby brother to the Cod Hopper and has all the features packed into a small profile to chase Bass, Small Natives, Saratoga and any other surface feeding species. The lure is fitted with Strong VMC Trebles



Front on view



### COLOUR RANGE



01 - Black



02 - Black / White



03 - Pearl White / Black Scale



04 - Orange / Black Scale



05 - Green / Black



06 - Black / Red Head



07 - Black / Chartreuse Stripes

## WARLOCK COD HOPPER

MODEL	WEIGHT	LENGTH	ACTION	CODE
COD HOPPER	30GM	98MM	SURFACE	07WCH...

The Warlock Cod Hopper is an exciting and visual surface lure with a loud and unique action. The bib design makes using the Cod Hopper a breeze and the lure will dance and walk across the surface inviting a strike. The lure is fitted with 3X Strong VMC Trebles and heavy duty fittings making it ideal to chase all large predatory surface feeders.



Front on view



### COLOUR RANGE



01 - Black



02 - Black / White



03 - Pearl White / Black Scale



04 - Orange / Black Scale



05 - Green / Black



06 - Black / Red Head



07 - Black / Chartreuse Stripes





Scan for lure action



## BARRA BAIT

This classic design of this lure has been responsible for some large catches in both fresh and saltwater. It is the first choice for impoundment fishing and a great option for big saltwater rivers.

LENGTH MM	WEIGHT GMS	DIVING DEPTH	SWIMMING ACTION	ITEM CODE
150	28	2.5mt/8ft	WOBBLE	04K6BB ..
150	28	4mt/12ft	WOBBLE	04K612BB ..
150	28	7mt/20ft	WOBBLE	04K620BB ..



02 - Blue / Yellow



23 - Elton John



67 - Guns "N" Roses



150mm



72 - Splice



73 - Yellow Terra



76 - Bobby Dazzler Green Tiger



77 - Silver Scale



78 - Oil Slick



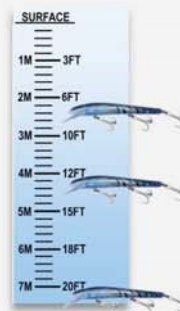
79 - Flaming Pink



BDGO - Bobby Dazzler Gold



BDSIS - Bobby Dazzler Silver Stripe



## 2DEADLY



Scan for lure action

The innovative 2Deadly is one of Lance Butler's most successful designs, and certainly one of his all-time favourites. Thanks to it's unique design and profile, this creative lure can be fished as both a surface popper and a shallow diver in the same retrieve.

The 2Deadly gives anglers the best of both worlds; with the splash and sound of a popper, and the flash and vibration of a diver.



LENGTH MM	WEIGHT GMS	DIVE DEPTH	ITEM CODE
60	11	0-1mt/3ft	05K2D6 ..

LENGTH MM	WEIGHT GMS	DIVE DEPTH	ITEM CODE
85	14	0-2mt/6ft	05K2D8 ..

LENGTH MM	WEIGHT GMS	DIVE DEPTH	ITEM CODE
120	21	0-2MT/6ft	05K2D12 ..

### 2DEADLY 60

### 2DEADLY 85

### 2DEADLY 120



54 - Flaming Pink Sizes:60-85-120



CH - Chartreuse Silver Flash Sizes:120



GR - Guns "N" Roses Sizes:60-85-120



SP - Splice Sizes:60-85-120



BL - Blue Silver Flash Sizes:120



GB - Gold / Black Sizes:60-85-120



OL - Olivia Sizes:60-85-120



T3 - Brook Trout Sizes:60-85



BN - Bananafish Sizes:120



GM - Gold Mullet Dazzler Sizes:60-85-120



P13 - Pink Knight Sizes:60-85



TL - Tiger Lily Sizes:60-85-120



Scan for lure action



## TERMINATOR

Small in size, but huge in strength and performance. This great little lure is designed for hard-core snag casting amongst structure. Fire them into the strike zone and hang on tight, just about anything will smash it!

LENGTH MM	WEIGHT GMS	DIVING DEPTH	SWIMMING ACTION	ITEM CODE
75	14	2.5/8ft	WOBBLE	04K3TM...



### COLOUR RANGE



01 - Gold / Black



04 - Chart / Orange



15 - Chrome / Red Stripe



23 - Elton John



67 - Guns "N" Roses



72 - Splice



79 - Flaming Pink



BDGO - Bobby Dazzler Gold

Scan for lure action



## FLATZ RAT 2

The Flatz Rat 2 is one of the most popular lures in our range, and it is extremely versatile across a wide range of applications. Suitable for all sportfish and are a great 'all-rounder'.

LENGTH MM	WEIGHT GMS	DIVING DEPTH	SWIMMING ACTION	ITEM CODE
75	11	3mt/10ft	SUSPEND	04K3BBS...
75	11	3mt/10ft	WOBBLE	04K3BBD...
75	11	5mt/15ft	WOBBLE	04K3BDD...



COLS: Suspending: 01-02-15-23-67-72-79-BDGO

COLS: +10: ALL COLOURS

COLS: +15: 01-23-67-72-74-79-80-BDGO



01 - Gold / Black



72 - Splice



02 - Blue / Yellow



74 - Teal Warrior



09 - Brown / Yellow



79 - Flaming Pink



10 - Strawberry Pie



80 - Diamond Scale Mullet



15 - Chrome / Red Stripe



81 - Crimson Flash



23 - Elton John



BDGO - Bobby Dazzler Gold Stripe



67 - Guns "N" Roses



PPU - Pink / Purple

Scan for lure action



## CONE POPPER

The Cone Popper has an oversized cupped face that emits a loud blooping noise.

This combined with a big splash of water, triggers strikes in a wide variety of predatory fish.

LENGTH MM	WEIGHT GMS	DIVING DEPTH	SWIMMING ACTION	ITEM CODE
90	19	Surface	POPPING	04K9...



### COLOUR RANGE



01 - Gold / Black



45 - Chrome / Blue



55 - Chrome / Yellow



71 - Red / Head



BDGO - Bobby Dazzler Gold Stripe



BDSI - Bobby Dazzler Silver



PB - Purple / Blue





## JEWIE



Scan for lure action

The Jewie lure is built extra-tough to handle hard-core fishing from ocean rock ledges, breakwalls and other heavy saltwater locations. Built for long casts on heavy tackle.

LENGTH MM	WEIGHT GMS	DIVING DEPTH	SWIMMING ACTION	ITEM CODE
150	57	1mt/3ft	WOBBLE	04KJ...



COLOUR RANGE



01 - Gold / Black



02 - Blue / Silver



15 - Black / Silver



19 - Red Bait



71 - Red Head



71 - Purple / Blue

## RIVER RAT



The River Rat is a stand-out general purpose saltwater lure that is great for both casting & trolling. Catches most predatory species.

LENGTH MM	WEIGHT GMS	DIVING DEPTH	SWIMMING ACTION	ITEM CODE
125	21	4mt/12ft	WOBBLE	04K512RR...
125	21	7mt/20ft	WOBBLE	04K520RR...



COLOUR RANGE



01 - Gold / Black



10 - Strawberry Pie



23 - Elton John



67 - Guns "N" Roses



72 - Splice



BDG0 - Bobby Dazzler Gold



## NEEDLENOSE



Scan for lure action

The Needle Nose lure is drawn from the body which extends over the bib. This gives increased strength and creates a tight action which is maintained at all speeds. The body shape and weighting ensures a bullet like casting ability. Through Wire Tow Point and Hook Hangers for superior strength. The interchangeable Rattle Chamber technology, Dynamic Interchange System (DIS), gives the Needle Nose a loud rattle, single ball rattle or be silent on demand. A bib giving the lure a "crash dive" ability when casting to structure incorporating the H2O HydroKeel giving added stability when trolling or retrieving. The wide sway and body roll of the Needle Nose has been responsible for some amazing catches and is truly a versatile lure for many freshwater and saltwater species alike.

LENGTH MM	WEIGHT GMS	DIVING DEPTH	SWIMMING ACTION	ITEM CODE
160	38	3mt/10ft	WOBBLE	05KNN...
160	38	7mt/20ft	WOBBLE	05KNNND...



## COLOUR RANGE



BN - Bananafish



CH - Chartreuse Silver Flash



CM - Candy Man



GB - Gold / Black



GR - Guns "N" Roses



OL - Olivia



TL - Tiger Lily

## DIS - DYNAMIC INTERCHANGE SYSTEM

D.I.S. - short for Dynamic Interchange System - is a new concept in hard-body lure performance from Killalure. It incorporates a series of special CAD-designed chambers that fit into the body of the lure allowing the angler to instantly alter it's dynamic properties. Experienced anglers have long known that predatory fish species will respond differently to lures depending on the surrounding conditions and environment.



## H2O - HYDRO KEEL

The H2O HydroKeel allows water to pass through the bib of the lure at a specific rate of flow (controlled by size & position) which serves two purposes; the first is to relieve pressure over the leading face of the bib, thus reducing resistance at a controlled rate; and the second is to stabilise the action of the lure by creating a theoretical 'track' through the bib, making the lure track straight and run true. All that an angler really needs to worry about though, is that the Killalure H2O HydroKeel makes a great lure swim even better!



## 3PK LURES

The most popular selling and proven colours are in each lure pack.



2DEADLY60/80/120



BARRA BAIT



FLATZ RAT



NEEDLENOSE



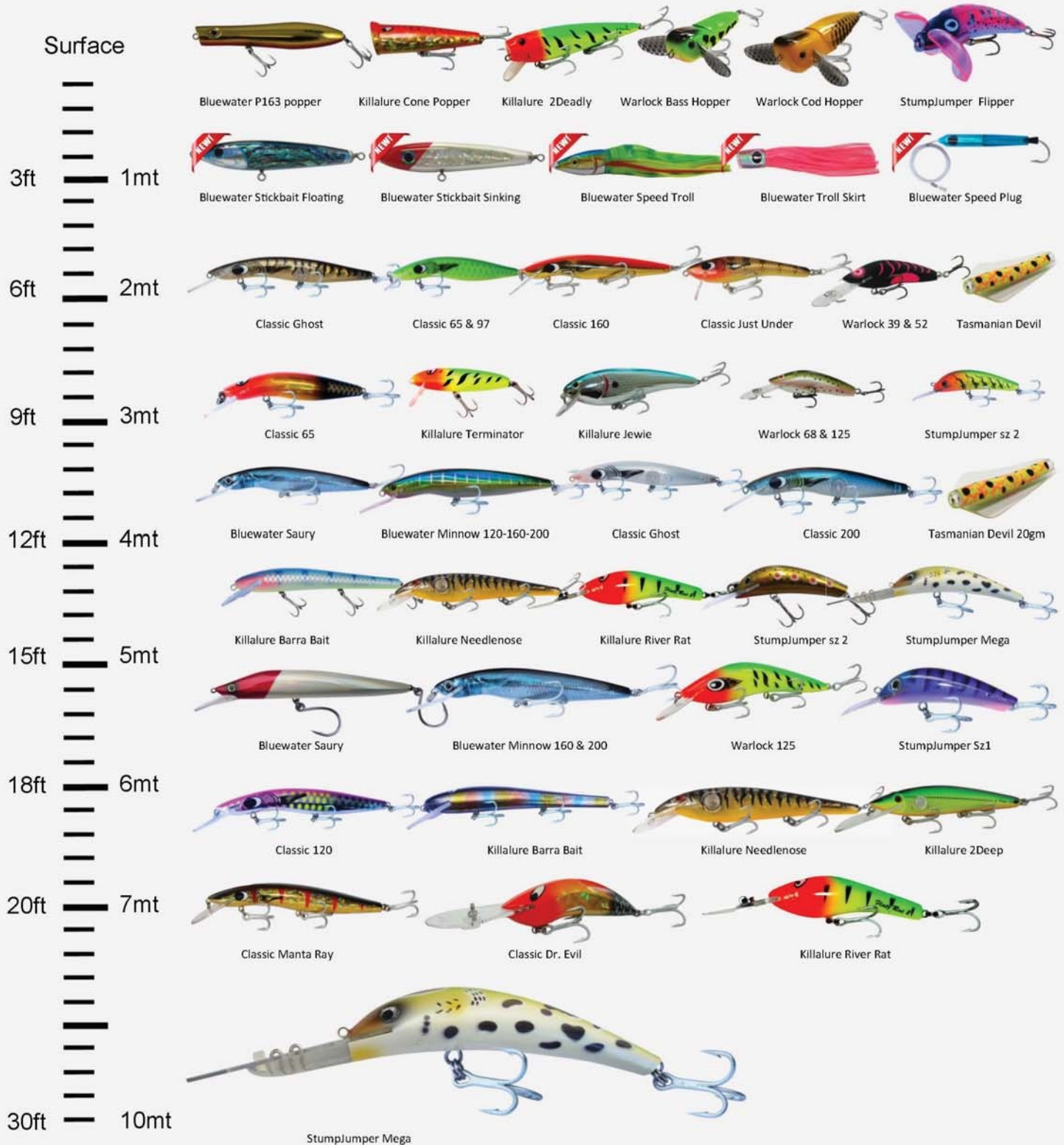
2EASY



2DEEP



## LURE DIVE DEPTH CHART



\* Due to J.M.Gillies constant product development, specifications and images may vary from those published in this catalogue. All sizes and measurements are approximates only.



## VERTICAL STORAGE

The Vertical Rod Rack is designed in Australia and is moulded from high impact plastic that will not splinter or rot. Each Rod Rack can hold up to 6 rods and it will not tip over. It can be fixed to the wall with 4 screws included.



CODE : 195EAD2

Twin Packs

Unit - W:44cms x H:54cms



## HORIZONTAL STORAGE

Securely store any rod type with the reel still on. This rack maximizes the capacity of your storage area and it is great for over doorways. The rod rack is a durable one piece design that fixes easily to the wall, also it keeps the rods out of reach of children.



CODE : 1952

2 racks per pack  
can hold  
up to 3 rods



CODE : 1956

6 racks per pack  
can hold  
up to 9 rods



## BERLEY BASKET

The SEADOG berley basket is very functional and easy to use. The basket is surrounded by 8mm holes which allow an even flow of berley, has a positive locking lid, comes supplied with 1.5 metres of rope and can accommodate different weights to suit varying tidal conditions, as well all sorts of berley; dry, wet or frozen.

### BERLEY BASKET LARGE

- Easy access, flip open lid
- 420mm long x 170mm diameter
- Can disassemble to store flat
- 9 Litre capacity CODE:19SBPL



### BERLEY BASKET SMALL

- Easy access, flip open lid
- 210mm long x 170mm diameter
- Can disassemble to store flat
- 4 Litre capacity CODE:19SBPS



- Secure rope attachment







Spanish Mackerel: Saury Lure



Giant Trevally: Bluewater P63 Popper



Barramundi: Killalure Needle-nose Lure



Queenfish: Bluewater P163 Popper



Pike: StumpJumper Lure



Trevally : Classic 160 Lure



Tigerfish: Classic 120 Lure



Brown Trout: StumpJumper Lure



Salmon: StumpJumper Lure



Peacock Bass : Killalure 2Deadly 120 Lure



Brown Trout: StumpJumper Lure



Tuna: Bluewater Minnow 200 Lure



Brown Trout: Tasmanian Devil Lure



Barramundi: Killalure Needle-nose Lure



Bass: StumpJumper Lure



Salmon: StumpJumper Lure



Dorado: Classic lure



Tuna: Bluewater Minnow lure



Tigerfish: Classic 120 Lure



Murray Cod: StumpJumper Lure



Brown Trout: StumpJumper Lure



Zander : StumpJumper Lure



Peacock Bass: Classic Just Under Lure



Spanish Mackerel: AussieJumper Lure



# PHOTO GALLERY



Mackerel: Bluewater Minnow Lure



Saratoga: Warlock Lure



Barramundi: Warlock Lure



Brown Trout: StumpJumper Lure



Snapper: Classic Dr. Evil Lure



Murray Cod: Killalure Needlenose Lure



Giant Trevally: Bluewater P163 Popper



Pike: Killalure 2 Deep Lure



Coral Trout: Classic Lure



Zander: StumpJumper Lure



Murray Cod: StumpJumper Lure



Barramundi: Classic Just Under Lure



Murray Cod: Warlock Cod Hopper Lure



Wahoo: Bluewater Saury Lure



Marlin: Bluewater Saury Lure



Giant Trevally: Bluewater Minnow Lure



Bass: Tasmanian Devil Lure



Bass: StumpJumper Lure



Pike: StumpJumper Lure



Estuary Cod: Classic 120 Lure



Barramundi: Warlock Hardbait Lure



Saratoga: Warlock Hardbait Lure



Mackerel: Bluewater Minnow Lure



Tigerfish: Bluewater Minnow Lure





**LURES AUSTRALIA**

Since 1928



[www.gillieslures.com](http://www.gillieslures.com)



